

PHASE 2

PLAT BOOK 139 PAGE 18
 RECORDED AS DOCUMENT NO. 2002001134

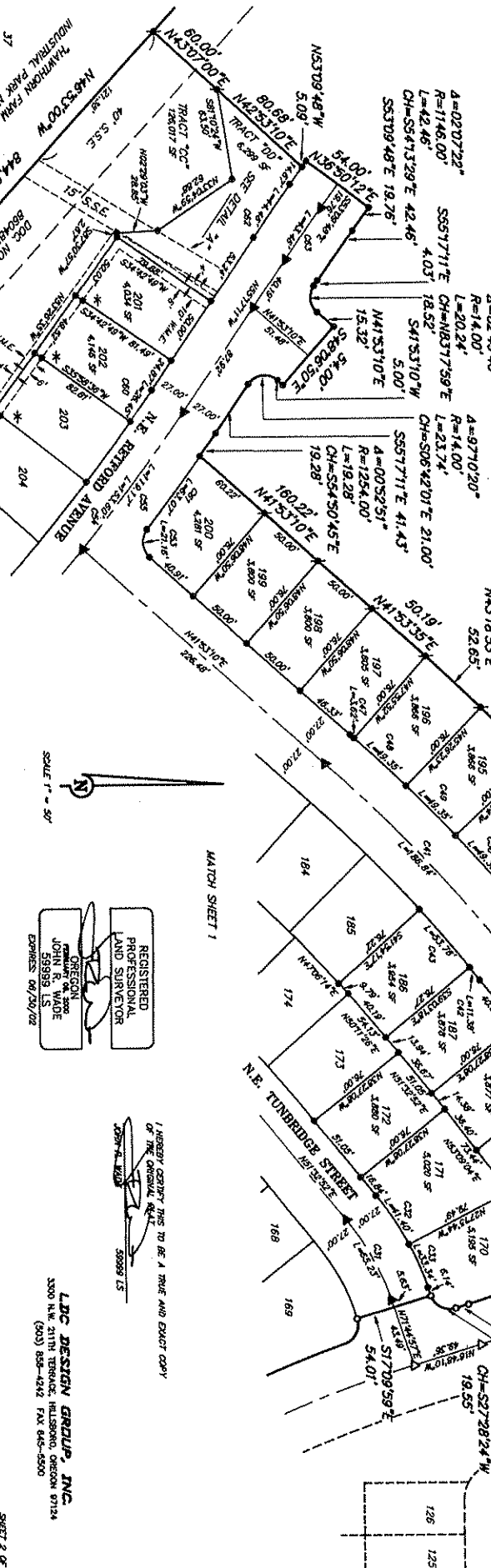
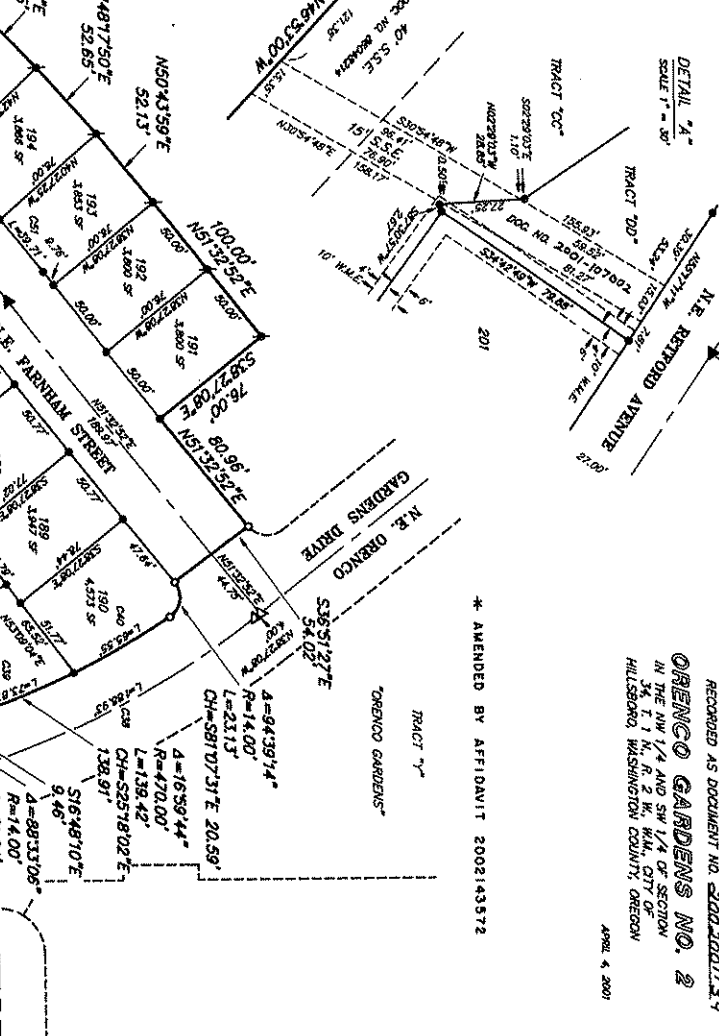
OREGON GARDENS NO. 2
 IN THE NW 1/4 AND SW 1/4 OF SECTION
 34, T. 1 N., R. 2 W., W.M., CITY OF
 HILLSBORO, WASHINGTON COUNTY, OREGON

APRIL 4, 2001

* AMENDED BY AFFIDAVIT 2002143572

CURVE	LENGTH	RADIUS	CHORD	BEARING	DELTA
1	17.97	696.00	17.97	S87°28'14" W	071.76°
2	3.24	82.00	3.24	S87°28'14" W	167.76°
3	44.52	658.00	44.52	S43°46'52" E	54°47'37" E
4	51.93	669.00	51.93	S58°44'35" E	04°42'19" E
5	44.17	669.00	44.17	S58°44'35" E	04°42'19" E
6	41.90	722.00	41.90	S52°15'52" E	04°39'34" E
7	48.98	722.00	48.98	S48°37'07" E	04°38'34" E
8	48.98	722.00	48.98	S48°37'07" E	04°38'34" E
9	15.69	722.00	15.69	S48°37'07" E	04°38'34" E
10	15.69	722.00	15.69	S48°37'07" E	04°38'34" E
11	15.69	722.00	15.69	S48°37'07" E	04°38'34" E
12	15.69	722.00	15.69	S48°37'07" E	04°38'34" E
13	15.69	722.00	15.69	S48°37'07" E	04°38'34" E
14	31.38	1444.00	31.38	S88°33'06" E	90°00'00" E
15	31.38	1444.00	31.38	S88°33'06" E	90°00'00" E
16	31.38	1444.00	31.38	S88°33'06" E	90°00'00" E
17	31.38	1444.00	31.38	S88°33'06" E	90°00'00" E
18	31.38	1444.00	31.38	S88°33'06" E	90°00'00" E
19	31.38	1444.00	31.38	S88°33'06" E	90°00'00" E
20	31.38	1444.00	31.38	S88°33'06" E	90°00'00" E
21	31.38	1444.00	31.38	S88°33'06" E	90°00'00" E
22	31.38	1444.00	31.38	S88°33'06" E	90°00'00" E
23	31.38	1444.00	31.38	S88°33'06" E	90°00'00" E
24	31.38	1444.00	31.38	S88°33'06" E	90°00'00" E
25	31.38	1444.00	31.38	S88°33'06" E	90°00'00" E
26	31.38	1444.00	31.38	S88°33'06" E	90°00'00" E
27	31.38	1444.00	31.38	S88°33'06" E	90°00'00" E
28	31.38	1444.00	31.38	S88°33'06" E	90°00'00" E
29	31.38	1444.00	31.38	S88°33'06" E	90°00'00" E
30	31.38	1444.00	31.38	S88°33'06" E	90°00'00" E
31	31.38	1444.00	31.38	S88°33'06" E	90°00'00" E
32	31.38	1444.00	31.38	S88°33'06" E	90°00'00" E
33	31.38	1444.00	31.38	S88°33'06" E	90°00'00" E
34	31.38	1444.00	31.38	S88°33'06" E	90°00'00" E
35	31.38	1444.00	31.38	S88°33'06" E	90°00'00" E
36	31.38	1444.00	31.38	S88°33'06" E	90°00'00" E
37	31.38	1444.00	31.38	S88°33'06" E	90°00'00" E
38	31.38	1444.00	31.38	S88°33'06" E	90°00'00" E
39	31.38	1444.00	31.38	S88°33'06" E	90°00'00" E
40	31.38	1444.00	31.38	S88°33'06" E	90°00'00" E
41	31.38	1444.00	31.38	S88°33'06" E	90°00'00" E
42	31.38	1444.00	31.38	S88°33'06" E	90°00'00" E
43	31.38	1444.00	31.38	S88°33'06" E	90°00'00" E
44	31.38	1444.00	31.38	S88°33'06" E	90°00'00" E
45	31.38	1444.00	31.38	S88°33'06" E	90°00'00" E
46	31.38	1444.00	31.38	S88°33'06" E	90°00'00" E
47	31.38	1444.00	31.38	S88°33'06" E	90°00'00" E
48	31.38	1444.00	31.38	S88°33'06" E	90°00'00" E
49	31.38	1444.00	31.38	S88°33'06" E	90°00'00" E
50	31.38	1444.00	31.38	S88°33'06" E	90°00'00" E

CURVE	LENGTH	RADIUS	CHORD	BEARING	DELTA
51	3.24	82.00	3.24	S87°28'14" W	167.76°
52	44.52	658.00	44.52	S43°46'52" E	54°47'37" E
53	51.93	669.00	51.93	S58°44'35" E	04°42'19" E
54	44.17	669.00	44.17	S58°44'35" E	04°42'19" E
55	41.90	722.00	41.90	S52°15'52" E	04°39'34" E
56	48.98	722.00	48.98	S48°37'07" E	04°38'34" E
57	48.98	722.00	48.98	S48°37'07" E	04°38'34" E
58	15.69	722.00	15.69	S48°37'07" E	04°38'34" E
59	15.69	722.00	15.69	S48°37'07" E	04°38'34" E
60	15.69	722.00	15.69	S48°37'07" E	04°38'34" E
61	15.69	722.00	15.69	S48°37'07" E	04°38'34" E
62	15.69	722.00	15.69	S48°37'07" E	04°38'34" E
63	15.69	722.00	15.69	S48°37'07" E	04°38'34" E
64	31.38	1444.00	31.38	S88°33'06" E	90°00'00" E
65	31.38	1444.00	31.38	S88°33'06" E	90°00'00" E
66	31.38	1444.00	31.38	S88°33'06" E	90°00'00" E
67	31.38	1444.00	31.38	S88°33'06" E	90°00'00" E
68	31.38	1444.00	31.38	S88°33'06" E	90°00'00" E
69	31.38	1444.00	31.38	S88°33'06" E	90°00'00" E
70	31.38	1444.00	31.38	S88°33'06" E	90°00'00" E
71	31.38	1444.00	31.38	S88°33'06" E	90°00'00" E
72	31.38	1444.00	31.38	S88°33'06" E	90°00'00" E
73	31.38	1444.00	31.38	S88°33'06" E	90°00'00" E
74	31.38	1444.00	31.38	S88°33'06" E	90°00'00" E
75	31.38	1444.00	31.38	S88°33'06" E	90°00'00" E
76	31.38	1444.00	31.38	S88°33'06" E	90°00'00" E
77	31.38	1444.00	31.38	S88°33'06" E	90°00'00" E
78	31.38	1444.00	31.38	S88°33'06" E	90°00'00" E
79	31.38	1444.00	31.38	S88°33'06" E	90°00'00" E
80	31.38	1444.00	31.38	S88°33'06" E	90°00'00" E
81	31.38	1444.00	31.38	S88°33'06" E	90°00'00" E
82	31.38	1444.00	31.38	S88°33'06" E	90°00'00" E
83	31.38	1444.00	31.38	S88°33'06" E	90°00'00" E
84	31.38	1444.00	31.38	S88°33'06" E	90°00'00" E
85	31.38	1444.00	31.38	S88°33'06" E	90°00'00" E
86	31.38	1444.00	31.38	S88°33'06" E	90°00'00" E
87	31.38	1444.00	31.38	S88°33'06" E	90°00'00" E
88	31.38	1444.00	31.38	S88°33'06" E	90°00'00" E
89	31.38	1444.00	31.38	S88°33'06" E	90°00'00" E
90	31.38	1444.00	31.38	S88°33'06" E	90°00'00" E

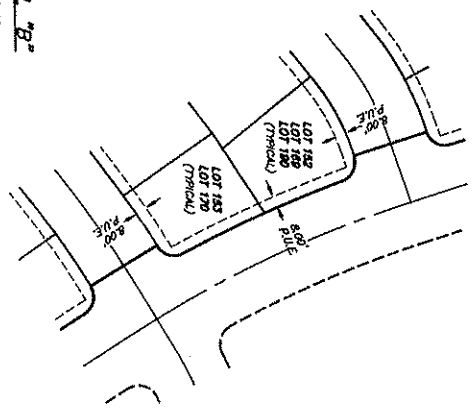


REGISTERED
 PROFESSIONAL
 LAND SURVEYOR
 OREGON
 JOHN R. WADE
 59999 LS
 EXPIRES 06/30/02

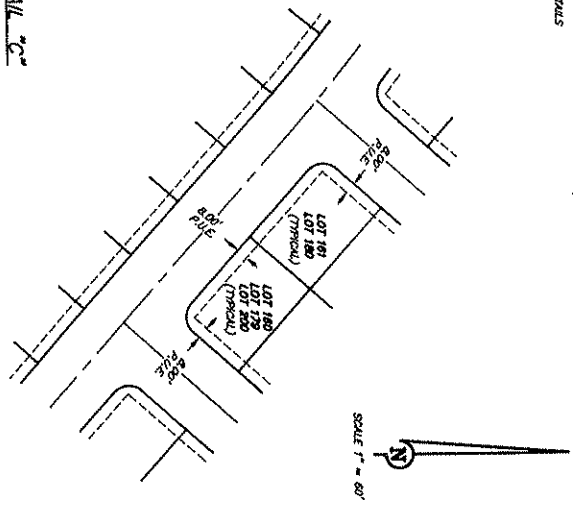
LDC DESIGN GROUP, INC.
 3300 N.E. TUNBRIDGE STREET, HILLSBORO, OREGON 97124
 (503) 882-4242 FAX 846-5500

PHASE 2

PLAT BOOK 139 PAGE 19
 RECORDED AS DOCUMENT NO. 2022061134
ORENCO GARDENS NO. 2
 IN THE NW 1/4 AND SW 1/4 OF SECTION
 34, T. 1 N., R. 2 W., W.M., CITY OF
 HILLSBORO, WASHINGTON COUNTY, OREGON
 APRIL 4, 2001
 LDC 2465



DETAIL "B"
 RULE DETAILS



DETAIL "C"
 RULE DETAILS

- NOTES:
1. ALL 8.00 FOOT WIDE PUBLIC UTILITY EASEMENT SHALL EXIST ALONG THE FRONTAGE OF ALL LOTS AND TRACTS ABUTTING PUBLIC STREETS EXCEPT AS SHOWN ON DETAILS "B" AND "C".
 2. THIS SUBDIVISION IS SUBJECT TO THE CONDITIONS OF APPROVAL PER OF CASE FILES SUB 16-02, CAP 3-00 AND CAP 6-04, CITY OF HILLSBORO.
 3. THE BASIS OF REVENUE AND BOUNDARY DETERMINATION ARE PER BOUNDARY SURVEY NO. 24802 AND THE PLAT OF ORENCO GARDENS, WASHINGTON COUNTY RECORDS.
 4. THIS SUBDIVISION IS SUBJECT TO THE RECORDING OF COVENANTS, CONDITIONS, AND RESTRICTIONS RECORDED AS DOCUMENT NUMBER 2022061134, WASHINGTON COUNTY RECORDS.
 5. TRACTS "00" AND "20" SHALL BE OWNED BY THE CITY OF HILLSBORO.
 6. THERE SHALL BE NO DIRECT MOTOR VEHICLE ACCESS ONTO THE ORENCO GARDENS DRIVE TO OR FROM ANY LOT OR TRACT IN THIS SUBDIVISION, UNLESS OTHERWISE APPROVED BY THE GOVERNING BODY HAVING JURISDICTION OF SAID ROAD.
 7. TRACT "00" IS FOR OPEN SPACE.
 8. EASEMENTS LABELED "WALL MAINTENANCE EASEMENTS" ARE FOR THE BENEFIT OF THE ORENCO GARDENS HOMEOWNERS ASSOCIATION.
 9. TRACT "20" IS SUBJECT TO A MAINTENANCE EASEMENT OVER ITS ENTIRETY FOR THE BENEFIT OF THE ORENCO GARDENS HOMEOWNERS ASSOCIATION.
 10. THIS SUBDIVISION IS SUBJECT TO A PUBLIC PATHWAY DISCLOSURE STATEMENT RECORDED AS DOCUMENT NO. 2022061136, WASHINGTON COUNTY RECORDS.

LDC DESIGN GROUP, INC.
 3300 N.W. 21TH TERRACE, HILLSBORO, OREGON 97124
 (503) 836-4242 FAX 545-5500

REGISTERED
 PROFESSIONAL
 LAND SURVEYOR
 OREGON
 JOHN R. WADE
 595919 LS
 EXPIRES 06/20/02

I HEREBY CERTIFY THIS TO BE A TRUE AND EXACT COPY
 OF THE ORIGINAL PLAT
 JOHN R. WADE
 595919 LS

